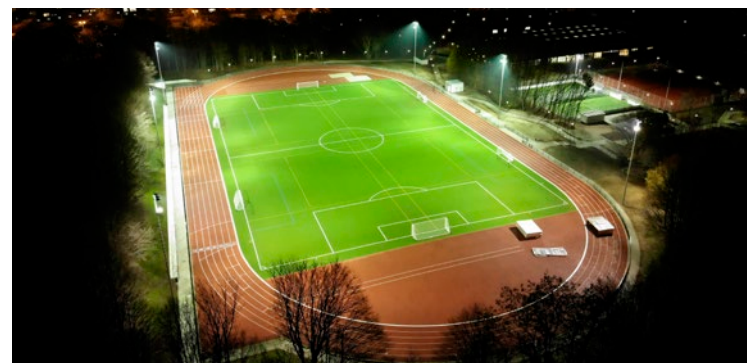


# SPORTS FACILITY LIGHTING

## Training . Competition . Championship

Lighting concepts & solutions for professional sports facilities



Version: January 2024

### Ushio Germany GmbH

Muenchener Strasse 10  
85643 Steinhoering/Germany  
CSC Europe +49 8094 906 - 400  
CSC Overseas +49 8094 906 - 410  
Fax +49 8094 906 - 164  
sales@ushio.de

[www.blv-licht.com](http://www.blv-licht.com)

[www.ushio.eu](http://www.ushio.eu)



BLV is a brand of the Ushio Group and is distributed by Ushio Germany GmbH



More than light! We evaluate your specific needs to provide the best individual lighting solution for your sports facility. Just give us a call, we will be glad to become your partner: ☎ +49 8094 906 400.

# PREFACE

No more irritation about the potential use of conventional metal halide lamps.

Our BLV STATURION® metal halide lamps are well-known worldwide, and are still manufactured at the headquarters in Germany and sold worldwide. These lamps are known for their high quality, excellent performance, and long lifetime.

Since the introduction of LED solutions, it has been falsely claimed time and time again by some market players that all metal halide lamps (HIT lamps for short), also known as HQI, HRI or HPI lamps, are banned by the EU under the EUP Directive VO 245/2009. This is in fact wrong and does not reflect current European legislation: On the one hand, this is confused with the general ban on mercury vapour lamps, better known as HQL lamps. On the other hand, the directive in question refers only to lamps that do not comply with certain requirements, e.g. with regard to energy efficiency. The BLV STATURION® lamps are also not affected by the current Energy Efficiency Regulation (EU) 2019/2020, which came into force on 01 September 2021.

Metal halide lamps have been in use since the mid 1960s and are still widely used today, belonging to the group of high-pressure discharge lamps. Their continued high popularity is due in particular to their outstanding photometric performance: They offer an extremely high luminous flux of up to 230,000 lm, a highly economical luminous efficacy of up to 115 lm/watt, and an excellent colour rendering index (Ra / CRI) of up to 90 compared to other discharge lamps.

All this makes them a perfect alternative to LED lighting for sports facilities that need, for example, shorter lighting times or high quality lamp replacement for existing installations.

# BLV STATURION®

## 50 years of experience in the lighting business

### **HISTORY**

BLV STATURION® is a brand of the Ushio Group, distributed by Ushio Germany, formerly BLV Licht- und Vakuumtechnik. The company, known for high quality lamps, with its own on-site production, was founded in Steinhöring, Bavaria, in 1968. Today, it enjoys a worldwide reputation as a leading manufacturer of specialist lighting solutions.

### **GLOBAL SCALE**

With the BLV STATURION® series, we have established ourselves as worldwide player in sports facility lighting, and have supplied our solutions across more than 40 countries for over a decade.

### **UNIQUENESS**

As one of the major players in the market, we continue to offer high quality conventional metal halide (MH) lamps alongside our LED lighting solutions. With this portfolio, we are able to consult and respond to different requirements, ranging from amateur sports clubs to big indoor and outdoor sport fields.

### **EVERYTHING YOU NEED**

We are much more than just a lighting solution provider. Having retained our character as a mid-sized company, we are able to anticipate individual customer demands. This includes economical advice, scenario comparison, light calculations, project installations, and sustained after-sales service.

### **GERMAN ROOTS, GLOBAL PRESENCE**

Besides our development, production, and sales sites in Germany and Poland, we have a sales team prepared to travel to our clients anywhere in the world.

### **STRONG BACKING**

BLV STATURION® is distributed by Ushio Germany. The company is member of the Ushio Group, a world player for special lighting with a yearly revenue of about 1.5 billion Euros.



# STATURION® LED astro

The new STATURION® LED astro is a precise and energy-efficient illumination source for smaller outdoor sports facilities such as tennis courts, skate parks, running tracks, athletics fields etc. as well as indoor venues such as tennis, (ice) hockey, soccer, paddle tennis, speed-skating, velodromes etc.



STATURION® LED astro



Also available as RegiTower LED in cooperation with our partner

## STATURION® LED astro:

- Series of stylish LED floodlights with various light output levels and light distributions
- Robust aluminium die-cast housing with integrated cooling fins
- Polyester powder coating, UV-stabilised, resistant to corrosion and salt
- Highly efficient LEDs combined with UV resistant PMMA lens optics
- 4 mm protection glass, tempered and resistant to thermal shocks and impacts
- Mounting bracket with graduated scale goniometer for accurate adjustment



# STATURION® MH lamps

The STATURION® MH series consists of long arc and short arc versions. From the very beginning, they have been produced at the company's location in Germany, contributing to Ushio's reputation as a producer of lamps of highest quality.

## STATURION® MH series



### STATURION® MH series:

- Very high efficiency / luminous efficacy
- High luminous flux and constancy of light colour throughout the lifetime
- Hot re-ignition
- The highly efficient 1000 W and 2000 W STATURION® metal halide lamps are not affected by the current EU regulations and may continue to be manufactured, sold and used in the European Economic Area (EEA), even after September 1, 2021.





# Light planning for sports facilities

## Careful preparation for best results

Optimum visibility is essential in sports. Therefore, some clear standards for luminosity, uniformity, glare limitation, and colour rendering have been defined in the European Sports Lighting standard DIN EN 12193. This directive defines lighting requirements for the most frequently practised sports. Generally, there are three main categories of lighting classes:

### Lighting class I

- High-performance competitions, such as international and national competitions, which are generally attended by large numbers of spectators. and great distances of sight are connected
- High-performance training

### Lighting class II

- Medium-level competitions, such as regional or local competitions, which are generally associated with medium numbers of spectators and medium viewing distances
- Performance training

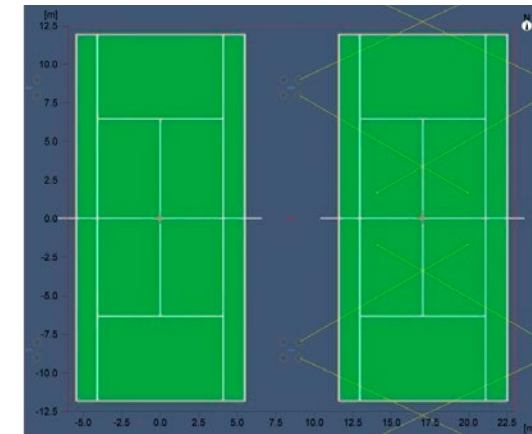
### Lighting class III

- Simple competitions, such as local or small club competitions, generally without spectator participation
- General Training
- School sport
- Recreational sport

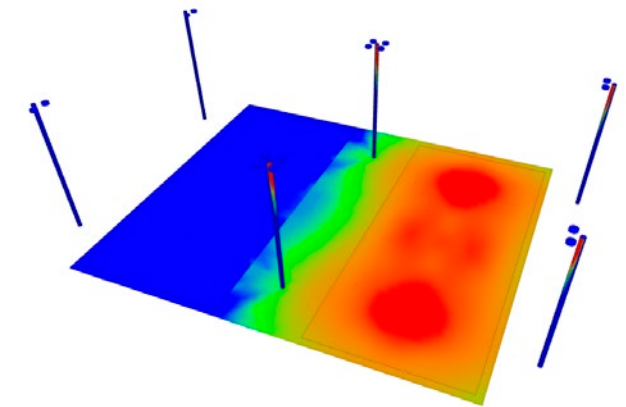
We will advise you in detail on all the requirements of the specific lighting class for your sports facility, including possible future upgrades if desired.

### Example of a light plan for a tennis field

- Definition of requested light level category and lux levels per area
- Set-up of spotlight positioning depending on local requirements and number of available poles
- Calculation of number and type of luminaires
- Simulation of different beam angles and light intensities
- Definition of ideal lighting control via integrated light management system



Court layout and positioning of floodlights



Simulation of light levels and uniformity

### Installation

As light is just one component of a lighting system, we help you to find a regional installer to set up the entire system, including ground, founding, vegetation, and installation work. All depending on your specific needs.

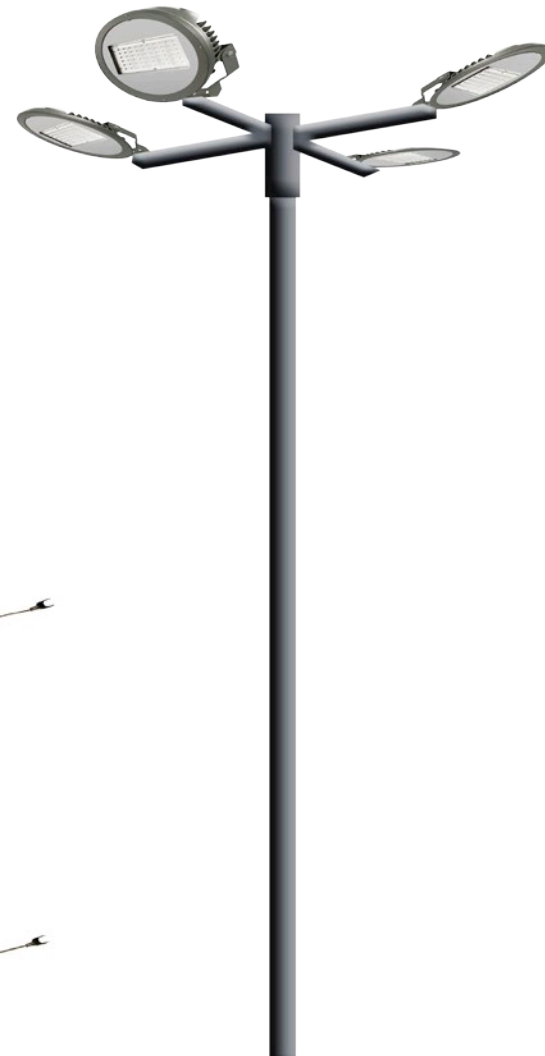
# Product overview

## BLV STATURION® LED and MH lamps

STATURION® LED astro



RegiTower LED

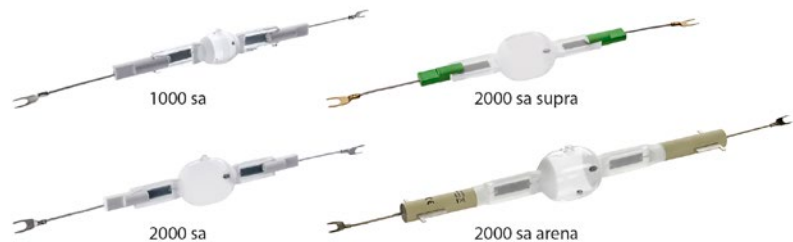


STATURION® MH lamp series

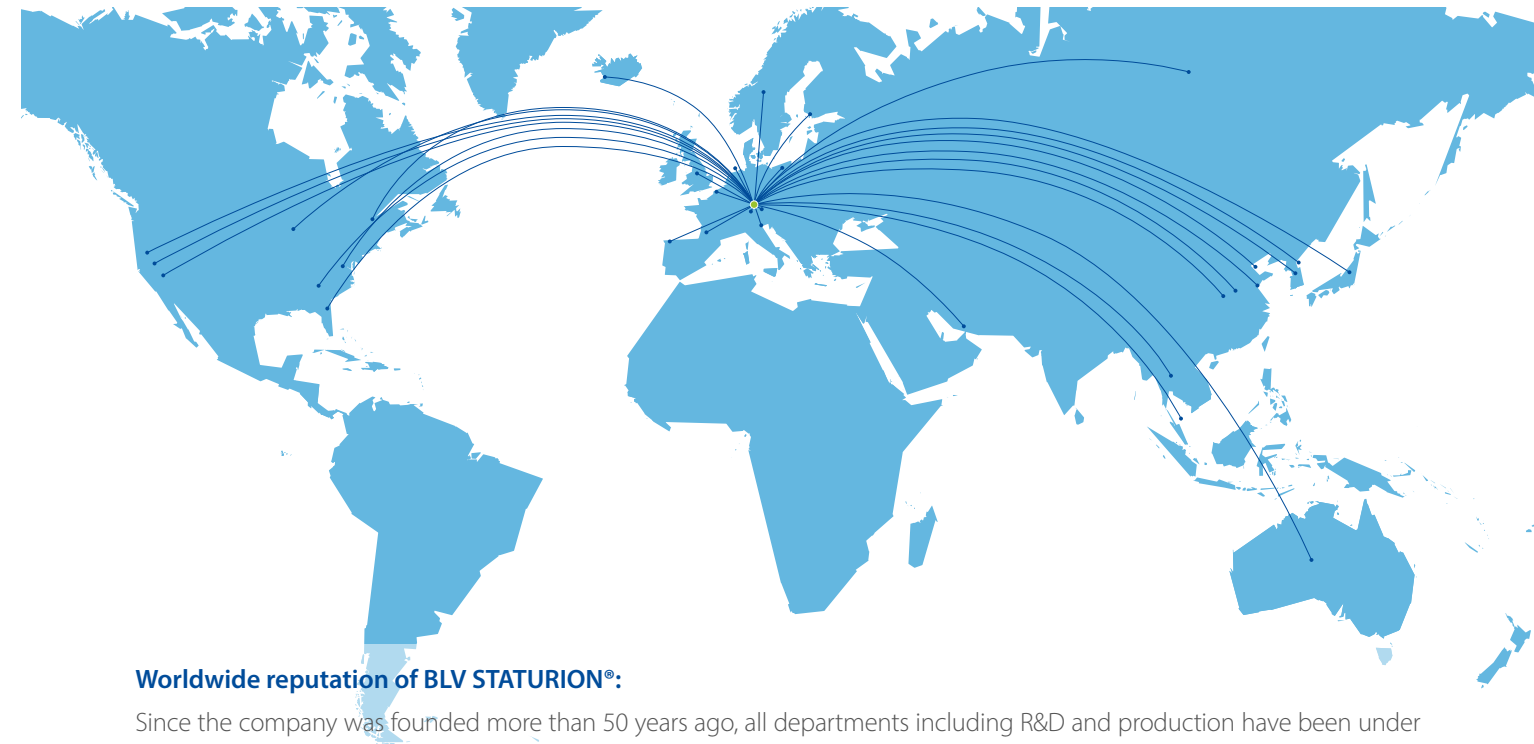
STATURION® la series



STATURION® sa series



# BLV STATURION® around the globe



## Worldwide reputation of BLV STATURION®:

Since the company was founded more than 50 years ago, all departments including R&D and production have been under one roof – the key to our success!

The construction of a high performance lamp for sports facility lighting places very special demands on the developers: In addition to creating the optimum chemical composition, the development of outstanding stability even at extremely high temperatures is crucial. A lamp product with such a high performance operates close to the physical limits of the materials. When manufacturing this type of lamp, precise work within very narrowly defined limits is an indispensable component for high product quality. Therefore a high level of technical expertise and craftsmanship is needed – which is why we manufactured and still manufacture the STATURION® MH lamps exclusively in Germany.

In recent years, the demand for LED lighting is constantly increasing. In this field, we are working together with partners who share our highest quality standards for best lighting solutions for your facilities.

## STATURION LED astro HP/HE floodlights

Article no.	Designation	System wattage [W]	Beam angle [°]	Luminous flux [lm] @ Ta 25°	Colour temperature [K]	Colour rendering index CRI	System efficiency [lm/W]	Dimensions Ø x H with folded bracket [mm]	Windage area Side / Front [cm²]	Weight [kg]
STATURION LED astro HP/HE										
118239	STATURION LED astro HP 1782-109	109	sym. 60°	15 131	4 000	80	139	462 x 160	551 / 1715	9.68
118240	STATURION LED astro HP 1782-139	139	sym. 60°	17 816	4 000	80	128	462 x 160	551 / 1715	9.74
118241	STATURION LED astro HP 1782-177	177	sym. 60°	23 236	4 000	80	131	462 x 160	551 / 1715	10.36
118242	STATURION LED astro HP 1782-258	258	sym. 60°	34 987	4 000	80	136	512 x 160	607 / 2100	11.83
118243	STATURION LED astro HE 2797-280	280	asym. 60°	32 446	4 000	70	116	512 x 160	607 / 2100	11.79

Housing colour graphite-grey • IP class/Impact resistance IP66/IK08

## STATURION MH lamps

Article no.	Designation	Base	Ø [mm]	Length [mm]	Burning position	Ignition voltage [kV]	Lamp current [A]	Nominal lamp power [W]	Rated lamp power [W]	Nominal luminous flux [lm]	Rated luminous flux [lm]	Ambient temperature for max. luminous flux [°C]	Rated lamp efficiency [lm/W]	Mercury content [mg]	Colour temperature [K]	Colour temperature [descr.]	Colour rendering index Ra / Colour rendering level	Nominal service life [h]	Weighted energy consumption [kWh/1 000 h]	Energy efficiency class
STATURION MH K12s																				
103112	HIT-DE sa 1000 dw	K12s	28.0	187.0	p15	4.0	10.3	1 000	1 000	90 000	90 000	25°C	90.0	365.0	6 300	daylight white	Ra>90/1A	8 000	1 100	A+
103113	HIT-DE sa 2000 dw	K12s	40.0	187.0	p15	4.0	10.3 11.3	2 000	2 000	200 000 215 000	200 000 215 000	25°C	100.0 108.0	365.0	6 300	daylight white	Ra>90/1A	6 000	2 200	A+
103118	HIT-DE sa 2000 dw supra	K12s	40.0	187.0	p15	4.0	12.2	2 000	2 000	230 000	230 000	25°C	112.0	365.0	6 200	daylight white	Ra80-89/1B	4 500	2 200	A+
103119	HIT-DE sa 2000 dw arena	cable	40.0	247.0	p15	4.0	11.3	2 000	2 000	215 000	215 000	25°C	108.0	365.0	6 300	daylight white	Ra>90/1A	5 000	2 200	A+
103116	HIT-DE la 2000 nw	K12s	30.0	274.0	p15	4.0	10.3	2 000	2 000	230 000	230 000	25°C	115.0	160.0	4 400	neutral white	Ra60-69/2B	8 000	2 200	A+
103120	HIT-DE la 2000 nw arena	cable	30.0	313.0	p15	4.0	10.3	2 000	2 000	230 000	230 000	25°C	115.0	160.0	4 400	neutral white	Ra60-69/2B	5 000	2 200	A+
MH E40																				
111997	HIT 2000 E40 nw	E40	106.0	430.0	p30	0.2	8.6	2 000	1 960	205 000	205 000	25°C	102.0	243.0	4 300	neutral white	Ra 60	9 000	2 151	A+